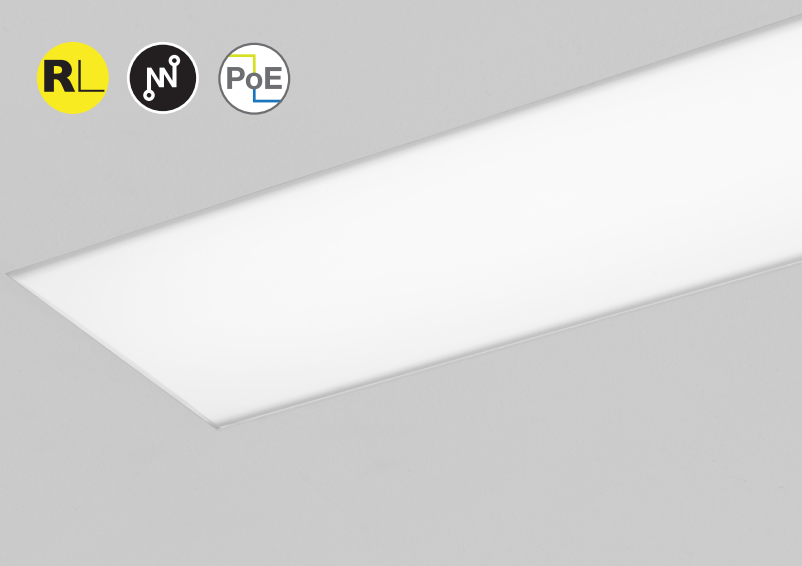


# Seem® 6 Drywall/Hard/Specialty Ceiling

LED



trimless mud-in



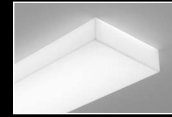
trim flange



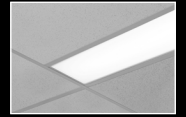
end detail



corner detail



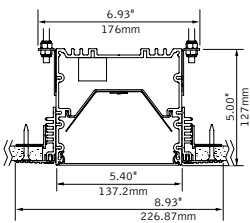
pop-down lens companion



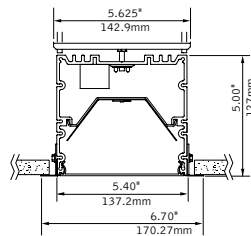
grid ceiling companion

## DIMENSIONAL DATA

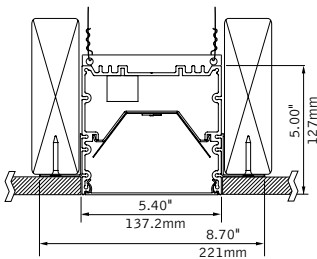
Trimless mud-in



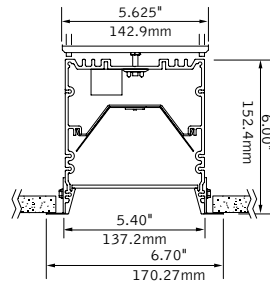
Trim flange



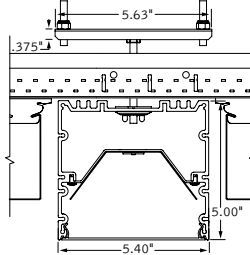
Trimless hard surface



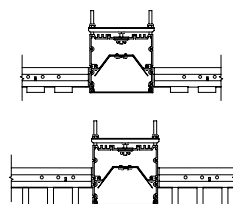
Regress Lens (trim flange shown)



No flange



Specialty ceiling examples



## FEATURES

Narrow extruded aluminum 6" aperture recessed slot LED.

Integrates with ceiling or wall in a variety of mounting styles for a clean, unobtrusive aesthetic.

Individual units and continuous runs in 1" increments.

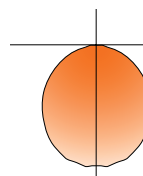
Frosted acrylic lens provides uninterrupted illumination, without pixels or shadows.

LED position and lens material optimized to provide the perfect blend of high performance and visual comfort.

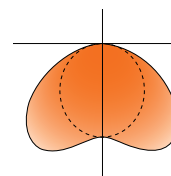
Connected Solutions: Integrates with wired and wireless building lighting control systems.

PoE compatible: Integrates with Power over Ethernet lighting systems via standard, low-voltage wires.

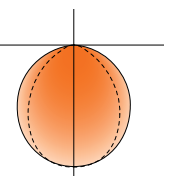
## DISTRIBUTIONS



Flush Lens



Batwing Lens



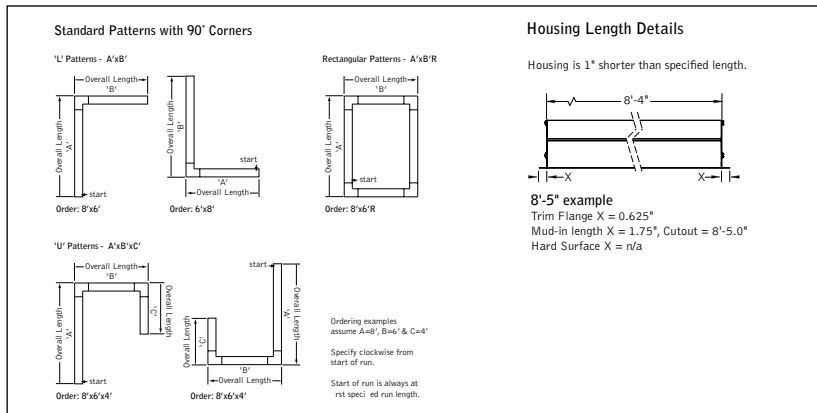
Regressed Lens

Photometric performance is measured in accordance with IESNA LM-79. Visit [focalpointlights.com](http://focalpointlights.com) for complete photometric data.

fixture:

project:

**DETAILS**



**SPECIFICATIONS**

**LED System**

Proprietary linear LED module incorporates premium LEDs on a robust platform to achieve excellent thermal management. LEDs are placed to promote a uniform appearance. Available in 2700K, 3000K, 3500K or 4000K with CRI>80 or CRI>90, 3 SDCM. 3500K and 4000K with CRI>90 have a cyanosis observation index (COI) of 3.3 or less. LED modules and drivers are replaceable from below.

**Construction**

One piece extruded aluminum housing, 20 Ga. steel end caps. Housing for new construction applications. XFW acceptable for use with wood, consult factory for Type IC availability. 2' unit weight: 18 lbs., 3' unit weight: 24 lbs., 4' unit weight: 30 lbs., 5' unit weight: 36 lbs.

**Optic**

Reflectors fabricated of 22 Ga. steel finished in High Reflectance White powder coat. Extruded acrylic lens .085" thick with satin finish, up to 8' continuous.

**Electrical**

Luminaires are pre-wired with factory installed branch circuit wiring and over-molded quick connects. Standard 120-277V constant current driver includes 0-10V analog dimming. Dimming range 100% to 10%. Power factor > .9. PoE compatible: Integrates with Power over Ethernet lighting systems via standard, low-voltage wires. PoE runs require an independent PoE node and power feed for each luminaire section.

**Emergency**

Emergency Battery output - 10 watts for 90 minutes. Maximum mounting height: 18.8ft. Emergency Circuit with Connected Solutions (LMFS1, LMFSD, ENL1, WLXP) shipped standard with leads to connect UL924 compliant device, by others.

**Labels**

UL and cUL listed. Suitable for Dry or Damp Locations, indoor use only.

**Finish**

Polyester powder coat applied over a multi-stage pre-treatment.

**Lumen Maintenance**

Reported: L70 > 61,000 hours      Calculated: L70 at > 350,000 hours  
 L90 > 61,000 hours              L90 at > 90,000 hours  
 (Derived from EPA TM-21 calculator. Based on typical conditions, consult factory for additional data.)

**Reliability**

At Focal Point, our products are designed to stand the test of time. Each luminaire is engineered using superior components, manufactured with the utmost care and rigorously tested. Contact us for reliability data.

**Warranty**

LED system rated for operation in ambient environments up to 25°C. 5-year limited warranty.

**4' PERFORMANCE CHART**

Lumen Output per foot	Tested System Watts	Delivered Lumens   LPW				Tested System Watts	Delivered Lumens   LPW			
		FL		BW			SR		SRXP	
375LF	18.2	1737	95	1939	106	17.2	1675	97	1855	108
625LF	31.2	2949	94	3291	105	29.4	2872	98	3180	108
875LF	44.2	4066	92	4539	103	41.7	4030	97	4462	107
1000LF	50.8	4636	91	5175	102	47.9	4531	95	5017	105
1125LF	53.6	4874	91	5441	101	52.2	4867	93	5389	103
1250LF	60.8	5412	89	6041	99	57.3	5407	94	5987	104

Based on 3500K, 80 CRI, 4' lengths. Lumen multipliers: . Lumen output may vary +/- 5%. Actual wattage may vary +/- 5%.



Options in orange qualify for the Quickship program, 1000' total. Refer to Quickship Guide for complete details including EM/EC options.

Focal Point LLC reserves the right to change specifications for product improvement without notification.

**ORDERING**

**Luminaire Series**

Seem 6 LED **FSM6L**

**Shielding**

Batwing Lens **BW**

Flush Lens **FL**

Regressed Lens\* **SR**

**Regressed High Performance Lens\*** **SRXP**

**Lumen Output**

375 Lumens per foot **375LF**

625 Lumens per foot **625LF**

875 Lumens per foot **875LF**

1000 Lumens per foot **1000LF**

1125 Lumens per foot **1125LF**

1250 Lumens per foot **1250LF**

**Color Temperature**

2700K, 80+ CRI or 90+ CRI **27K or 927K**

3000K, 80+ CRI or 90+ CRI **30K or 930K**

3500K, 80+ CRI or 90+ CRI **35K or 935K**

4000K, 80+ CRI or 90+ CRI **40K or 940K**

**Circuits & Zones**

1 Circuit, non-emergency **1C**

Consult Ordering Guide on page 4 for multiple circuiting and zoning options **\_C\_Z\_DL**

**Voltage**

120/277 UNV Volt **UNV**

Low voltage **LV**

**Control System & Dimming Level**

0-10V - 10% Dimming **LD1**

0-10V - 1% Dimming **L11**

Low Voltage, PoE compatible **LVN**

Lutron Hi-Lume EcoSystem (LDE1) - 1% Dimming **LH1**

DAL1 1% Dimming **D11**

(Not available with patterns.)

Wattstopper Fixture Sensor\*\*\*1 **LMFS1**

Low Density - 1% Dimming

Wattstopper Fixture Sensor\*\*\*1 **LMFSD**

High Density - 1% Dimming

Enlighted Smart Sensor - 1% Dimming\*\*\*1 **ENL1**

WaveLinX Pro - 1% Dimming\*\*\*1 **WLXP**

\*\* (3' minimum length, with ECD/EM - 7' minimum, XF1, XF2 and XFF only)

1 (See sensor layout guide)

**Ceiling Configurations**

No Flange for specialty ceilings **NF**

(Ex. slat, panel, cloud systems. 3' minimum with Lutron Drivers)

Trim Flange Drywall **TF**

(3' minimum with Lutron Drivers)

Trim Flange Wood **TFW**

(3' minimum with Lutron Drivers)

Mud-in Trimless, pre-set for 1/2" Drywall **XF1**

Mud-in Trimless, pre-set for 5/8" Drywall **XF2**

Mud-in Trimless, set thickness in field **XFF**

(Mounting equipment assembled in field)

Non-Drywall Hard Surface **XFN**

Hard Surface, Wood **XFW**

**Factory Options**

(See Ordering Guide on page 4 for ordering details for DC, EC, EM & ECD.)

Chicago Plenum **CP**

(Not available with Flex Whip)

Daylight Circuit **\_DC**

Emergency Circuit **\_EC**

Emergency Battery Pack† **\_EM**

Emergency Control Device† **\_ECD**

† (4' minimum, 6' minimum with patterns. 120/277 Volt only. Not available at corners.)

6' New York City Flex Whip (120V) **FNY1**

6' New York City Flex Whip (277V) **FNY2**

6' Flex Whip **FW**

**Finish**

Matte White Housing **WH**

**Luminaire Length**

Specify luminaire/row length in 1" increments **\_ft\_in**

(2' minimum, lengths are nominal 1" increments. Housing length is 1" shorter than specified. Leave blank for patterns. Smaller increments available, consult factory.)

**Pattern Options**

(4' minimum length)

'L' pattern **A' x B'**

'U' pattern **A' x B' x C'**

Rectangular pattern **A' x B' R**


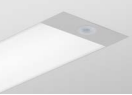

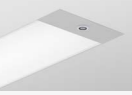

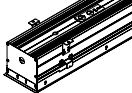



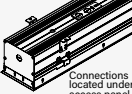
(Consult factory for other pattern options)

**FSM6L**

**WH**

**ft in**

Focal Point provides flexibility in meeting the needs of each project by integrating with several building lighting control systems. A variety of sensors, drivers and other components can be specified that allow the luminaires to communicate with wired and wireless networks. All zoning can be digitally reconfigured through the application software. Daylight harvesting, occupancy sensing, integration with HVAC systems, and individual controls enable the monitoring and modulating of light levels and temperature in order to save energy, reduce costs and maximize occupants' comfort. All Connected Solutions luminaires require a compatible building control system.†

Connected Solution	Ordering Code	Model #**	Protocol	Compatible Networks*	Occupancy & Daylight	Temperature Reporting	Communication to Luminaire	Drivers
 <b>legrand</b> WATTSTOPPER® 	LMFS1	LMFS-601 & LMFI-111	DLM Wireless	DLM	Enabled	No	Wireless	<b>Advance by Signify</b>
	LMFSD	LMFS-601						<b>Optotronic by eldoLED (Dexal)</b>
 <b>COOPER</b> Lighting Solutions 	WLXP	OEM-WAA	WaveLinx Wireless	WaveLinx Pro Trellix	Enabled	No	Wireless (WaveLinx Pro Wireless Area Controller)	<b>Advance by Signify</b>
 <b>CRESTRON</b>  <p>Connections located under access panel.</p>	D11	Specified Driver	DALI	Crestron Züm Wireless & SpaceBuilder	Enabled	No	Wired	<b>eldoLED ECOdrive</b>
	L11		0-10V					<b>Advance by Signify</b>
 <b>Enlighted</b> 	ENL1	SU-5E-IOT	Enlighted RF	Enlighted	Integrated	Yes	Wireless	<b>Advance by Signify</b>
 <b>LUTRON</b>  <p>Connections located under access panel.</p>	LH1	LDE1	EcoSystem	Quantum, Energi Savr Node, Energi TriPak	Enabled	No	Wired	<b>Lutron Hi-Lume</b>

\*Not all compatible networks may be listed. \*\*For performance data and additional control system details please visit the connected solutions manufacturer websites. Primary drivers are listed in **bold**. To specify a particular driver please consult factory. †Controls systems supplied by others.