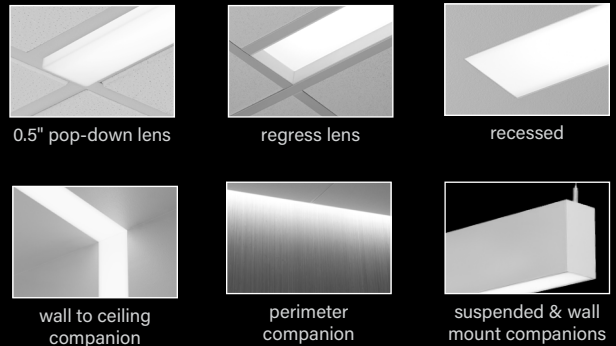
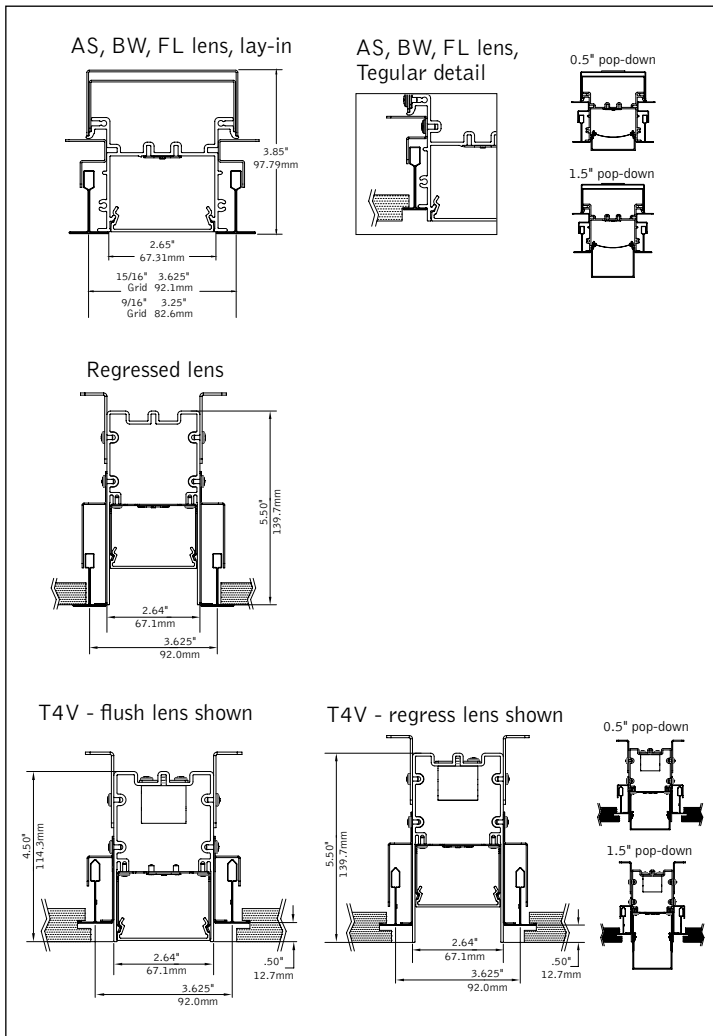


Seem[®] 2 Grid Ceiling

LED



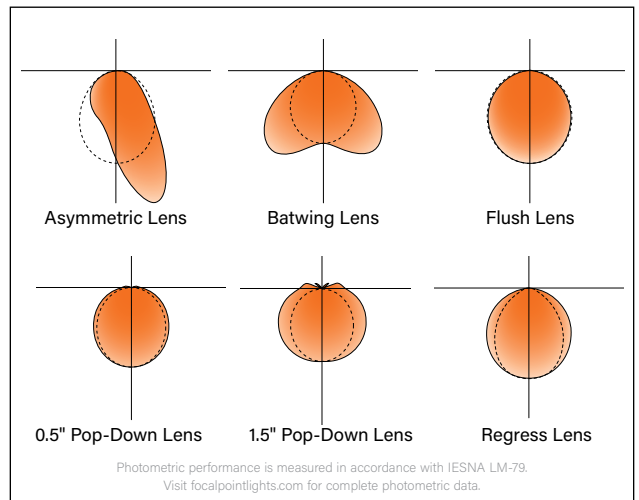
DIMENSIONAL DATA



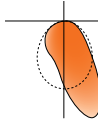
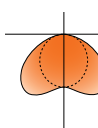
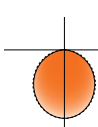
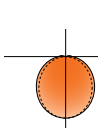
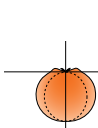
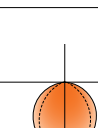
FEATURES

- Narrow extruded aluminum 2.5" aperture recessed slot LED.
- Individual units and continuous runs in 1" increments.
- Frosted acrylic lens provides uninterrupted illumination, without pixels or shadows.
- LED position and lens material optimized to provide the perfect blend of high performance and visual comfort.
- Tunable White: Supports human activity, well-being, and preferences with a light quality that evolves throughout the day.
- Connected Solutions: Integrates with wired and wireless building lighting control systems.
- PoE compatible: Integrates with Power over Ethernet lighting systems via standard, low-voltage wires.

DISTRIBUTIONS



4' PERFORMANCE CHART

Shielding	Lumens per Foot	Delivered Lumens	Tested System Watts	LPW
Asymmetric Lens 	125LF	561	5.7	99
	250LF	1172	9.6	122
	375LF	1784	13.9	128
	500LF	2390	18.3	130
	625LF	2989	23.7	126
	750LF	3582	28.4	126
	875LF	4167	33.4	125
Batwing Lens 	1000LF	4745	38.4	124
	125LF	538	5.7	95
	250LF	1124	9.6	117
	375LF	1711	13.9	123
	500LF	2293	18.3	125
	625LF	2867	23.7	121
	750LF	3436	28.4	121
Flush Lens 	875LF	3997	33.4	120
	1000LF	4551	38.4	119
	125LF	504	5.7	89
	250LF	1052	9.6	109
	375LF	1601	13.9	115
	500LF	2145	18.3	117
	625LF	2682	23.7	113
Pop Down 0.5" Lens 	750LF	3214	28.4	113
	875LF	3739	33.4	112
	1000LF	4257	38.4	111
	125LF	472	5.7	83
	250LF	985	9.6	102
	375LF	1500	13.9	108
	500LF	2010	18.3	110
Pop Down 1.5" Lens 	625LF	2513	23.7	106
	750LF	3011	28.4	106
	875LF	3503	33.4	105
	1000LF	3990	33.4	104
	125LF	470	5.7	83
	250LF	981	9.6	102
	375LF	1493	13.9	107
Regress Lens 	500LF	200	18.3	109
	625LF	2502	23.7	106
	750LF	2997	28.4	105
	875LF	3487	33.4	104
	1000LF	3971	33.4	103
	125LF	472	5.7	83
	250LF	986	9.6	102

Based on 3500k, 4' lengths. Lumen multiplier: Continuous runs = 0.93 Lumen output may vary +/- 5%. Actual wattage may vary +/- 5%.

STANDARD WHITE

Luminaire Series

Seem 2 LED Grid **FSM2L**

Shielding

Asymmetric Lens **AS**

Batwing Lens **BW**

Flush Lens **FL**

0.5" Pop-Down Lens **PD05**

1.5" Pop-Down Lens **PD15**

(Individual units only)

Regress Lens **SR**

(Housing height 5.5' Ceiling applications only)

Lumen Output

125 Lumens per foot **125LF**

(LD1, L11 & D11 driver only, 4' minimum. Not available on patterns.)

250 Lumens per foot **250LF**

(3' minimum with LH1. Not available on patterns with LH1.)

375 Lumens per foot **375LF**

500 Lumens per foot **500LF**

625 Lumens per foot **625LF**

750 Lumens per foot **750LF**

875 Lumens per foot **875LF**

1000 Lumens per foot **1000LF**

Color Temperature

2700K, 80+ CRI or 90+ CRI **27K or 927K**

3000K, 80+ CRI or 90+ CRI **30K or 930K**

3500K, 80+ CRI or 90+ CRI **35K or 935K**

4000K, 80+ CRI or 90+ CRI **40K or 940K**

Circuits & Zones

1 Circuit, non-emergency **1C**

Consult Ordering Guide on page 5 for multiple **_C_Z_DL**

Voltage

120/277 UNV Volt **UNV**

347 Volt (LD1 & L11 driver only) **347V**

Low Voltage **LV**

Control System & Dimming Level

0-10V - 10% Dimming **LD1**

0-10V - 1% Dimming **L11**

Low Voltage, PoE compatible **LVN**

(No driver. Not available with EM or EC LV Voltage only.)

Lutron Hi-Lume EcoSystem (LDE1) - **LH1**

1% Dimming **D11**

DALI 1% Dimming **DLM1**

Wattstopper DLM - 1% Dimming** **DLM1**

(Not available with CP)

Wattstopper Fixture Sensor*** **LMFS1**

Low Density - 1% Dimming **LMFSD**

See sensor layout guide

Wattstopper Fixture Sensor*** **LMFSD**

High Density - 1% Dimming **LAW1**

See sensor layout guide

Lutron Athena Wireless Node** **LAW1**

Lutron Athena Wireless Sensor*** **LAWS**

Acuity nLight - 1% Dimming** **NLT1**

(Not available with CP)

Enlighted Smart Sensor - 1% Dimming*** **ENL1**

See sensor layout guide

Encelium CLM Connected Lighting Module -** **CLM1**

1% Dimming

Current NX Enabled - 1% Dimming** **NXE1**

(Not available with CP)

WaveLinX Pro - 1% Dimming*** **WLXP**

See sensor layout guide

** (3' minimum length, with ECD/EM - 7' minimum.)

† (Not available with pop-down lenses.)

Ceiling Configuration

Std. 15/16" Lay-in (G1) or Tegular (T1) **G1 or T1**

Std. 9/16" Lay-in (G2) or Tegular (T2) **G2 or T2**

9/16" Slot-tee Tegular **G3**

Tall 15/16" Lay-in (G4) or Tegular (T4) **G4 or T4**

Tall 15/16" Tegular for specialty ceilings (0.5" drop) **T4V**

Tall 9/16" Lay-in (G5) or Tegular (T5) **G5 or T5**

Note 9/16" Tegular **T6**

Factory Options

(See Ordering Guide for ordering details for DC, EC, EM, & ECD.)

Chicago Plenum **CP**

(Not available with Flex Whip)

Daylight Circuit **_DC**

Emergency Circuit **_EC**

Emergency Battery Pack† **_EM**

Emergency Control Device† **_ECD**

† (4' minimum, 6' minimum with patterns. 120/277 Volt only. Not available at corners...)

6' New York City Flex Whip (120V) **FNY1**

6' New York City Flex Whip (277V) **FNY2**

6' Flex Whip **FW**

Finish

Matte White Housing **WH**

Luminaire Length

Specify luminaire/row length in 1" increments **_ft_in**

(2" minimum, lengths are nominal 1" increments based on T-centers. Housing length is 1" shorter than specified. Leave blank for patterns. Smaller increments available, consult factory.)

Pattern Options

(4' minimum length)

'L' pattern **A' x B'**

'U' pattern **A' x B' x C'**

Rectangular pattern **A' x B' R**

(Consult factory for other pattern options)

QS 10 DAY Options in orange qualify for the Quickship program. 1000' total, 48' maximum per pattern section. Refer to Quickship Guide for complete details including EM/EC options.



4' PERFORMANCE CHART

Shielding	Lumens per Foot	Delivered Lumens	Tested System Watts	LPW
Asymmetric Lens 	125LF	500	7.25	79.3
	250LF	1000	12.90	93.1
	375LF	1500	18.55	98.5
	500LF	2000	18.3	101.1
	625LF	2500	24.21	102.5
	750LF	3000	29.86	106.8
	875LF	3500	34.34	107.5
Batwing Lens 	1000LF	4000	39.71	107.8
	125LF	500	7.25	7.25
	250LF	1000	12.90	12.90
	375LF	1500	18.55	18.55
	500LF	2000	18.3	18.3
	625LF	2500	24.21	24.21
	750LF	3000	29.86	29.86
Flush Lens 	875LF	3500	34.34	34.34
	1000LF	4000	39.71	39.71
	125LF	500	7.25	69.0
	250LF	1000	12.90	80.9
	375LF	1500	18.55	85.7
	500LF	2000	18.3	87.9
	625LF	2500	24.21	89.2
Pop Down 0.5" Lens 	750LF	3000	29.86	92.9
	875LF	3500	34.34	93.5
	1000LF	4000	39.71	93.7
	125LF	500	7.25	83
	250LF	1000	12.90	66.2
	375LF	1500	18.55	77.7
	500LF	2000	18.3	82.2
Pop Down 1.5" Lens 	625LF	2500	24.21	84.4
	750LF	3000	29.86	85.6
	875LF	3500	34.34	89.2
	1000LF	4000	39.71	89.7
	125LF	500	7.25	90
	250LF	1000	12.90	65.5
	375LF	1500	18.55	76.9
Regress Lens 	500LF	2000	18.3	81.4
	625LF	2500	24.21	83.5
	750LF	3000	29.86	84.7
	875LF	3500	34.34	88.3
	1000LF	4000	39.71	88.8
	125LF	500	7.25	89.1
	250LF	1000	12.90	102
	375LF	1500	18.55	108
	500LF	2000	18.3	110
	625LF	2500	24.21	106
	750LF	3000	29.86	106
	875LF	3500	34.34	105
	1000LF	4000	39.71	104

Based on 2700K, 80CRI, 4' lengths. Lumen output may vary +/- 5%. Actual wattage may vary +/- 5%

Lumen Multiplier

Wattage Multipliers

CRI	Multiplier	CCT	Multiplier
80+	1.00	2700K	1.00
90+	0.89	3000K	0.92
		3500K	0.88
		4000K	0.86
		5000K	0.85
		5700K	0.87



TUNABLE WHITE

Luminaire Series

Seem 2 LED Grid

Shielding

Asymmetric Lens

Batwing Lens

Flush Lens

0.5" Pop-Down Lens

1.5" Pop-Down Lens

Regress Lens

(Housing height 5.5" Ceiling applications only)

Lumen Output

125 Lumens per foot

250 Lumens per foot

375 Lumens per foot

500 Lumens per foot

625 Lumens per foot

750 Lumens per foot

875 Lumens per foot

1000 Lumens per foot

Color Temperature

Tunable White: 2700-6500K, 80+ CRI

Tunable White: 2700-6500K, 90+ CRI

Circuits & Zones

1 Circuit, non-emergency

Consult Ordering Guide on page 5 for multiple

circuiting and zoning options

Voltage

120/277 UNV Volt

347 Volt (LD1 & L11 driver only)

Low Voltage

Control System & Dimming Level

DALI 1% Dimming†

(Default driver offers DT6 control. It requires two addresses,

one for intensity & one for CCT tuning.

Consult factory for DT8. Extended lead time applies.)

Ceiling Configuration

Std. 15/16" Lay-in (G1) or Tegular (T1)

Std. 9/16" Lay-in (G2) or Tegular (T2)

9/16" Slot-tee Tegular

Tall 15/16" Lay-in (G4) or Tegular (T4)

Tall 15/16" Tegular for specialty ceilings (0.5" drop)

Tall 9/16" Lay-in (G5) or Tegular (T5)

Node 9/16" Tegular

Factory Options

(See Ordering Guide for ordering details for DC, EC, EM, & ECD.)

Chicago Plenum

(Not available with Flex Whip)

Daylight Circuit

Emergency Circuit

Emergency Battery Pack†

Emergency Control Device†

†(4' minimum, 6' minimum with patterns. 120/277 Volt only.

Not available at corners.)

6' New York City Flex Whip (120V)

6' New York City Flex Whip (277V)

6' Flex Whip

Finish

Matte White Housing

Luminaire Length

Specify luminaire/row length in 1" increments

(2" minimum, lengths are nominal 1" increments based on T-centers.

Housing length is 1" shorter than specified. Leave blank for patterns.

Smaller increments available, consult factory.)

Pattern Options

(4' minimum length)

'L' pattern

'U' pattern

Rectangular pattern

(Consult factory for other pattern options)

FSM2L

FSM2L

AS

BW

FL

PD05

PD15

SR

125LF

250LF

375LF

500LF

625LF

750LF

875LF

1000LF

2765T

92765T

1C

_C_Z_DL

UNV

347V

LV

D1TW

G1 or T1

G2 or T2

G3

G4 or T4

T4V

G5 or T5

T6

CP

_DC

_EC

_EM

_ECD

FNY1

FNY2

FW

WH

WH

ft in

_ft _in

A' x B'

A' x B' x C'

A' x B' R

SPECIFICATIONS

LED System

Proprietary linear LED module incorporates premium LEDs on a robust platform to achieve excellent thermal management. LEDs are placed to promote a uniform appearance. Available in 2700K, 3000K, 3500K or 4000K with CRI>80 or CRI>90, 3 SDCM. 3500K and 4000K with CRI>90 have a cyanosis observation index (COI) of 3.3 or less. Non-Regress housing LED modules are replaceable from below, driver access above ceiling. Regress housing LED modules and drivers are replaceable from below.

Construction

One piece extruded aluminum housing. 20 Ga. steel end caps. Steel driver compartment. Flush lens weights: 4' unit: 12.18 lbs., 8' unit: 21.34 lbs. Regress lens weights: 4' unit: 10.1 lbs., 8' unit: 20.2 lbs.

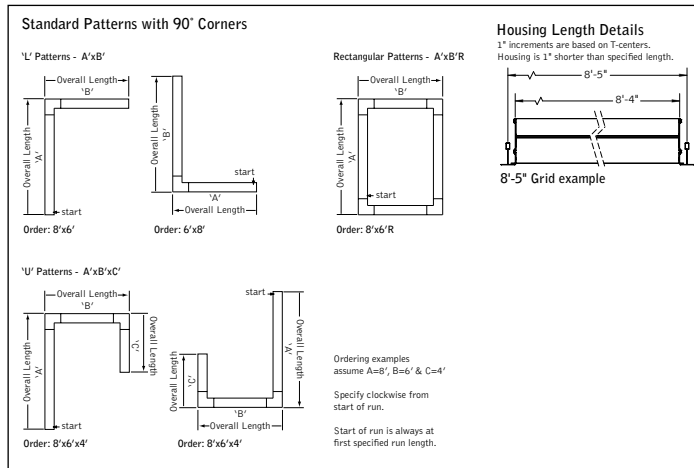
Optic

Extruded acrylic lens .060" thick with satin finish, up to 8' continuous. Regress lens .118" thick acrylic lay-in lens and 22 Ga. reflector finished in high reflectance white powder coat.

Electrical

Luminaires are pre-wired with factory installed branch circuit wiring and quick connects. Standard 120-277V constant current driver includes 0-10V analog dimming. Power factor > .9. PoE compatible: Integrates with Power over Ethernet lighting systems via standard, low-voltage wires. PoE runs require an independent PoE node and power feed for each luminaire section.

DETAILS



Emergency

Emergency Battery output - 10 watts for 90 minutes. Maximum mounting height: 19.3ft (FL), 15.6ft (PD05). Emergency Circuit with Connected Solutions (DLM1, LMFS1, LMFS2, NLT1, ENL1, CLM1, NXE1, WLXP) shipped standard with leads to connect UL924 compliant device, by others.

Labels

UL and cUL listed. Suitable for Dry or Damp Locations, indoor use only.

Finish

Polyester powder coat applied over a multi-stage pre-treatment.

Lumen Maintenance

Reported: L70 at >61,000 hours	Calculated: L70 at 385,000 hours
L90 at >61,000 hours	L90 at 103,000 hours

Derived from EPA TM-21 calculator. Based on typical conditions, consult factory for additional data.

Reliability

At Focal Point, our products are designed to stand the test of time. Each luminaire is engineered using superior components, manufactured with the utmost care and rigorously tested. Contact us for reliability data.

Warranty

LED system rated for operation in ambient environments up to 25°C. 5-year limited warranty.

Focal Point provides flexibility in meeting the needs of each project by integrating with several building lighting control systems. A variety of sensors, drivers and other components can be specified that allow the luminaires to communicate with wired and wireless networks. All zoning can be digitally reconfigured through the application software. Daylight harvesting, occupancy sensing, integration with HVAC systems, and individual controls enable the monitoring and modulating of light levels and temperature in order to save energy, reduce costs and maximize occupants' comfort. All Connected Solutions luminaires require a compatible building control system.†

Connected Solution	Ordering Code	Model #**	Protocol	Compatible Networks*	Occupancy & Daylight	Temperature Reporting	Communication to Luminaire	Drivers
 WATTSTOPPER®	DLM1	LMFC-011	DLM	DLM	Enabled	No	Wired 	Advance by Signify , Optotronic by eldoLED
	LMFS1	LMFS-601 & LMFI-111	DLM Wireless	DLM	Integrated	No	Wireless	Advance by Signify
LMFSD	LMFS-601	Optotronic by eldoLED (Dexal)						
	WLXP	OEM-WAA	WaveLinX Wireless	WaveLinX Pro Trellix	Integrated	No	Wireless (WaveLinX Pro Wireless Area Controller)	Advance by Signify
	D11	Specified Driver	DALI	Crestron Züm Wireless & SpaceBuilder	Enabled	No	Wired	eldoLED ECOdrive
	L11		0-10V					Advance by Signify
	CLM1	ZBHA-CLM-DIM-ENC	ZigBee	Encelium X Light Management System	Enabled	No	Wireless	Optotronic by eldoLED Advance by Signify
	ENL1	SU-5E-IOT	Enlighted RF	Enlighted	Integrated	Yes	Wireless	Advance by Signify
	LAW1	A-WN-D01-RF-WH	DALI, 0-10V	Athena Wireless	Enabled	No	Wireless	Advance by Signify
	LAWS	A-WN-D01-OCC-WH	DALI, 0-10V	Athena Wireless	Integrated	No	Wireless	Advance by Signify
	LH1	LDE1	EcoSystem	Quantum, Energi Savr Node, Energi TriPak	Enabled	No	Wired	Lutron Hi-Lume
	NLT1	nEPS-60-IO	nLight	nLight	Enabled	No	Wired 	eldoLED ECOdrive, eldoLED SOLOdrive
	NXE1	NXFM-LV	NX	NX Distributed Intelligence	Enabled	No	Wired 	Optotronic by eldoLED

*Not all compatible networks may be listed. **For performance data and additional control system details please visit the connected solutions manufacturer websites. Primary drivers are listed in bold. To specify a particular driver please consult factory. †Controls systems supplied by others.