

# Seem® 2 Indirect

Suspended | FSM2IS



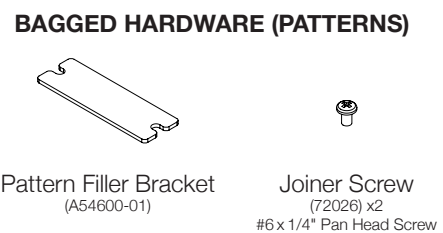
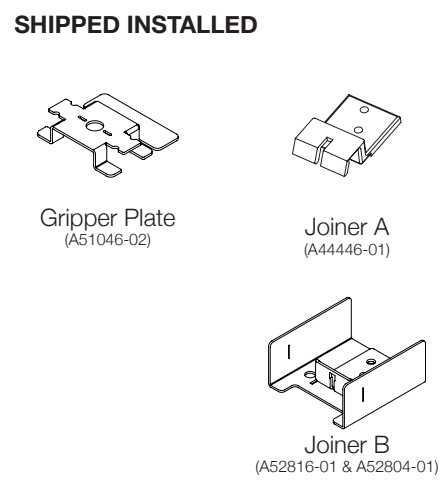
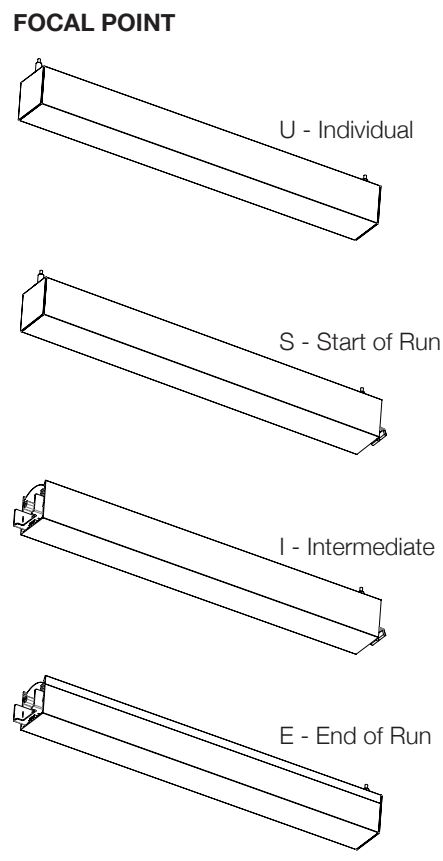
## BEFORE YOU BEGIN

- Configurations are run specific, please consult factory drawings before beginning installation.
- Luminaires must be installed by a qualified electrician (check with local and national codes for proper installation).
- To prevent electrical shock, disconnect electrical supply before installation or servicing.
- Contractor is responsible for adequately reinforcing walls and/or ceilings to support fixture weight.
- Focal Point, LLC accepts no responsibility for inadequately reinforced walls and/or ceilings.
- The information contained in this drawing is the sole property of Focal Point, LLC. Any reproduction in part or whole without the written permission of Focal Point, LLC is prohibited.

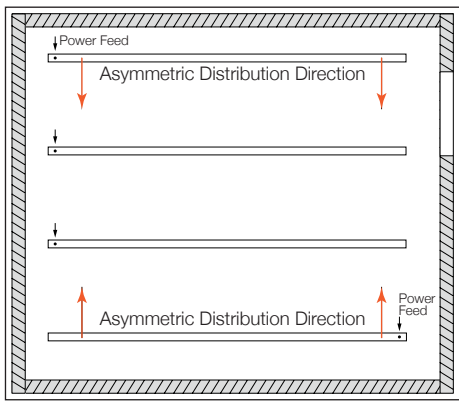
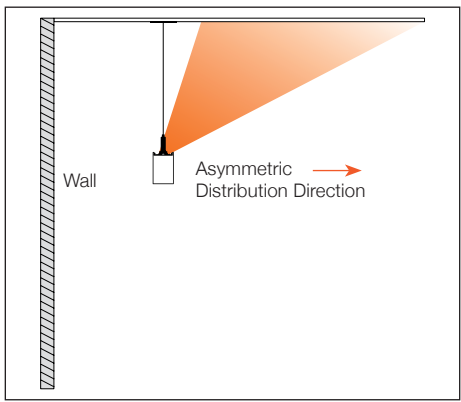
## INSTRUCTION KEY

- ATTENTION
- SEE ADDITIONAL INSTRUCTIONS
- POWER OFF
- POWER ON

## COMPONENT KEY



## INDIRECT ASYMMETRIC OPTIC



**INDIVIDUAL INSTALLATIONS FOLLOW STEPS 1-3 & 11**

**PATTERN INSTALLATIONS SEE PAGE 3**

**1**

**I**

**FOLLOW FOCAL POINT INSTRUCTIONS FOR UNIVERSAL SUSPENSION SYSTEM ASSEMBLY. SEE IS0166**

**2**

Avoid all contact with LED surface, LEDs are easily damaged!

**3**

**4**

**5**

**6**

**7**

Center gripper plate between luminaires

**8**

**9**

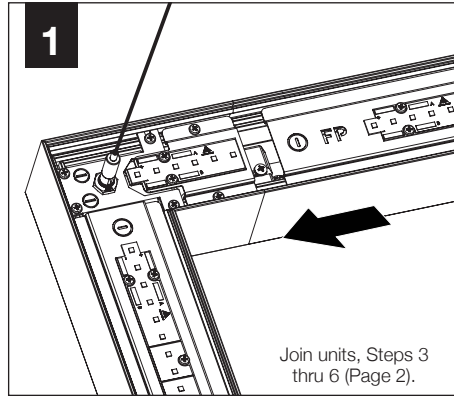
**10**

## PATTERN INSTALLATION

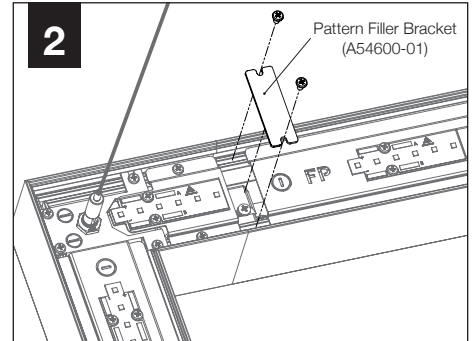


TO JOIN UNITS  
FOLLOW STEPS 3 THRU 6  
(PAGE 2)

1

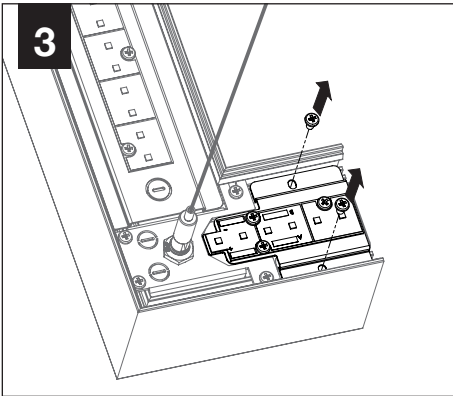


2

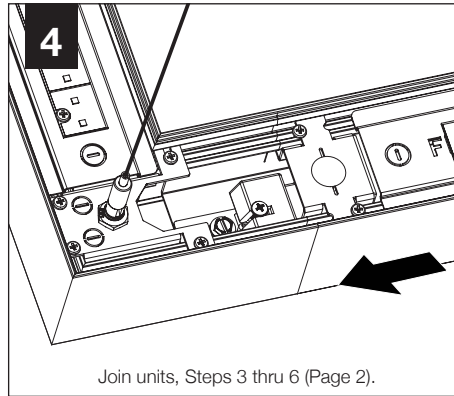


Install pattern filler bracket to avoid risk of electrical shock.

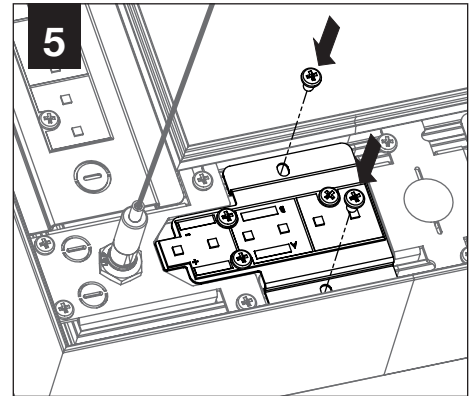
3



4



5



## DRIVER SERVICE

1

